

Dow Corning[®] MB50-010 Masterbatch

FEATURES & BENEFITS

- Imparts processing improvements and modified surface characteristics
- Improved throughput
- Reduced energy consumption
- Enhanced scratch resistance
- Improved slip properties
- Enhanced stability vs. traditional processing aids and lubricants

COMPOSITION

- Free flowing solid pellets

Ultra-high molecular weight siloxane polymer dispersed in thermoplastic polyester elastomer

APPLICATIONS

- Additive in polyester elastomer compatible systems

TYPICAL PROPERTIES

Specification Writers: These values are not intended for use in preparing specifications. Please contact your local Dow Corning sales office or your Global Dow Corning Connection before writing specifications on this product.

Property	Unit	Result
Appearance		Off-white pellets
Siloxane content	%	50
Organic resin		HYTREL ^{®1} , MI 11 (Durometer D Hardness 63)
Suggested use level	%	0.2 to 10

¹HYTREL is a registered trademark of E.I. du Pont de Nemours & Co.

DESCRIPTION

Dow Corning[®] MB50-010 Masterbatch is a pelletized formulation containing 50% of an ultra-high molecular weight (UHMW) siloxane polymer dispersed in HYTREL. It is designed to be used as an additive in polyester elastomer compatible systems to impart benefits such as processing improvements and modification of surface characteristics.

Liquid siloxane plastic additives have been used for several years to improve the lubricity and flow of thermoplastics. They are effective in this role although some difficulties have been experienced in the incorporation of liquids into thermoplastic melts without the use of specialized equipment. It has also been difficult to produce masterbatches with greater than 20% liquid siloxane because of processing difficulty and bleed problems.

The *Dow Corning*[®] MB Series Masterbatches address these problems by supplying a high concentration of an ultra-high molecular weight (UHMW) siloxane as a dispersion in a dry pellet form in a variety of thermoplastics.

BENEFITS

When added to HYTREL or similar polyester elastomers at 0.2% to 2.0%, improved processing and flow of the resin is expected, including better mold filling, less extruder torque, internal lubrication, mold release and faster throughput. At higher addition levels, 2% to 10%, improved surface properties are expected, including lubricity, slip, lower coefficient of friction, and greater mar and abrasion resistance.

The *Dow Corning* MB Series Masterbatches are expected to give improved benefits compared to conventional lower molecular weight siloxane additives, e.g., less screw slippage, improved release, a lower coefficient of friction, fewer paint and printing problems, and a broader range of performance capabilities. Figure 1 shows that the coefficient of friction values of a PBT elastomer are lowered by an ultra-high molecular weight siloxane additive. The uniform dispersion of sub to 5 micron particles of UHMW siloxane in HYTREL PBT elastomer can be seen in the scanning electron micrograph in Figure 2.

Figure 1: Coefficient of friction of PBT elastomers vs. rotational velocity.

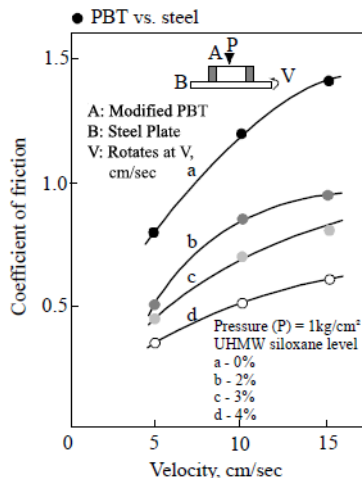
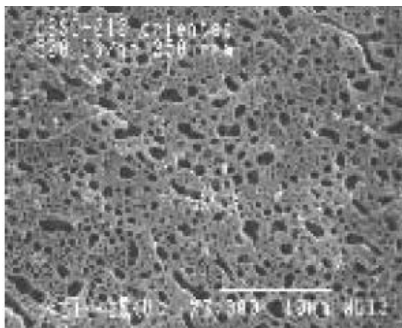


Figure 2: Scanning electron micrograph.



FOOD CONTACT

Dow Corning MB50-010

Masterbatch is suitable for use as a

slip or release agent in the production of the basic polymer or finished food contact article in compliance with US FDA regulation 21 CFR 177.2600. The polyester elastomer portion of *Dow Corning* MB50-010 Masterbatch complies with 177.2600 and the siloxane portion complies with 181.28.

HOW TO USE

Dow Corning MB Series Masterbatches may be processed in the same way as the thermoplastics on which they are based. Sufficient *Dow Corning* MB50-010 Masterbatch should be blended with virgin polymer pellets to give the desired siloxane level in the final product. *Dow Corning* MB50-010 Masterbatch pellets can be added during compounding in a single screw extruder or added at the feed hopper during injection molding or extrusion.

HANDLING PRECAUTIONS

Dow Corning MB50-010 Masterbatch is based on a polyester elastomer that may absorb moisture over time. As a result, drying may be required. Drying time is depended on moisture level; the product should be dried to less than 0.2% moisture, depending on application. Use of a dehumidifying or desiccant dryer set at 80°C (176°F) is recommended for 2 to 8 hours or until the required moisture level is reached.

PRODUCT SAFETY INFORMATION REQUIRED FOR SAFE USE IS NOT INCLUDED IN THIS DOCUMENT. BEFORE HANDLING, READ PRODUCT AND SAFETY DATA SHEETS AND CONTAINER LABELS FOR SAFE USE, PHYSICAL AND HEALTH HAZARD INFORMATION. THE SAFETY DATA SHEET IS AVAILABLE ON THE DOW CORNING WEBSITE AT DOWCORNING.COM, OR FROM YOUR DOW CORNING SALES APPLICATION ENGINEER, OR DISTRIBUTOR, OR BY CALLING

DOW CORNING CUSTOMER SERVICE.

USABLE LIFE AND STORAGE

When stored at or below 35°C (95°F) in the original unopened containers *Dow Corning* MB50-010 Masterbatch has a usable life of 48 months from the date of production.

PACKAGING INFORMATION

This product is available in a variety of container sizes. Contact your local *Dow Corning* sales representative for information about container sizes available in your area.

LIMITATIONS

This product is neither tested nor represented as suitable for medical or pharmaceutical uses.

HEALTH AND ENVIRONMENTAL INFORMATION

To support customers in their product safety needs, *Dow Corning* has an extensive Product Stewardship organization and a team of Product Safety and Regulatory Compliance (PS&RC) specialists available in each area.

For further information, please see our website, dowcorning.com or consult your local *Dow Corning* representative.

LIMITED WARRANTY INFORMATION – PLEASE READ CAREFULLY

The information contained herein is offered in good faith and is believed to be accurate. However, because conditions and methods of use of our products are beyond our control, this information should not be used in substitution for customer's tests to ensure that our products are safe, effective, and fully satisfactory for the intended end use. Suggestions of use shall not be taken as inducements to infringe any patent.

Dow Corning's sole warranty is that our products will meet the sales specifications in effect at the time of shipment.

Your exclusive remedy for breach of such warranty is limited to refund of purchase price or replacement of any product shown to be other than as warranted.

TO THE FULLEST EXTENT PERMITTED BY APPLICABLE LAW, DOW CORNING SPECIFICALLY DISCLAIMS ANY OTHER EXPRESS OR IMPLIED WARRANTY OF FITNESS FOR A PARTICULAR PURPOSE OR MERCHANTABILITY.

DOW CORNING DISCLAIMS LIABILITY FOR ANY INCIDENTAL OR CONSEQUENTIAL DAMAGES.

We help you invent the future.[™]

dowcorning.com